

HUMAN CELL TYPES

PromoCell

ENDOTHELIAL CELLS

LARGE VESSELS

Human Pulmonary Artery
Endothelial Cells (**HPAEC**)
Cat. No. C-12241

Human Coronary Artery
Endothelial Cells (**HCAEC**)
Cat. No. C-12221

Human Aortic
Endothelial Cells (**HAoEC**)
Cat. No. C-12271

Human Saphenous Vein
Endothelial Cells (**HSaVEC**)
Cat. No. C-12231

Human Umbilical Vein
Endothelial Cells (**HUVEC**)
Cat. No. C-12200

Human Umbilical Vein
Endothelial Cells 2 (**HUVEC 2**)
Cat. No. C-12206

Human Umbilical Artery
Endothelial Cells (**HUAEC**)
Cat. No. C-12202

MICROVASCULAR

Human Pulmonary Microvascular
Endothelial Cells (**HPMEC**)
Cat. No. C-12281

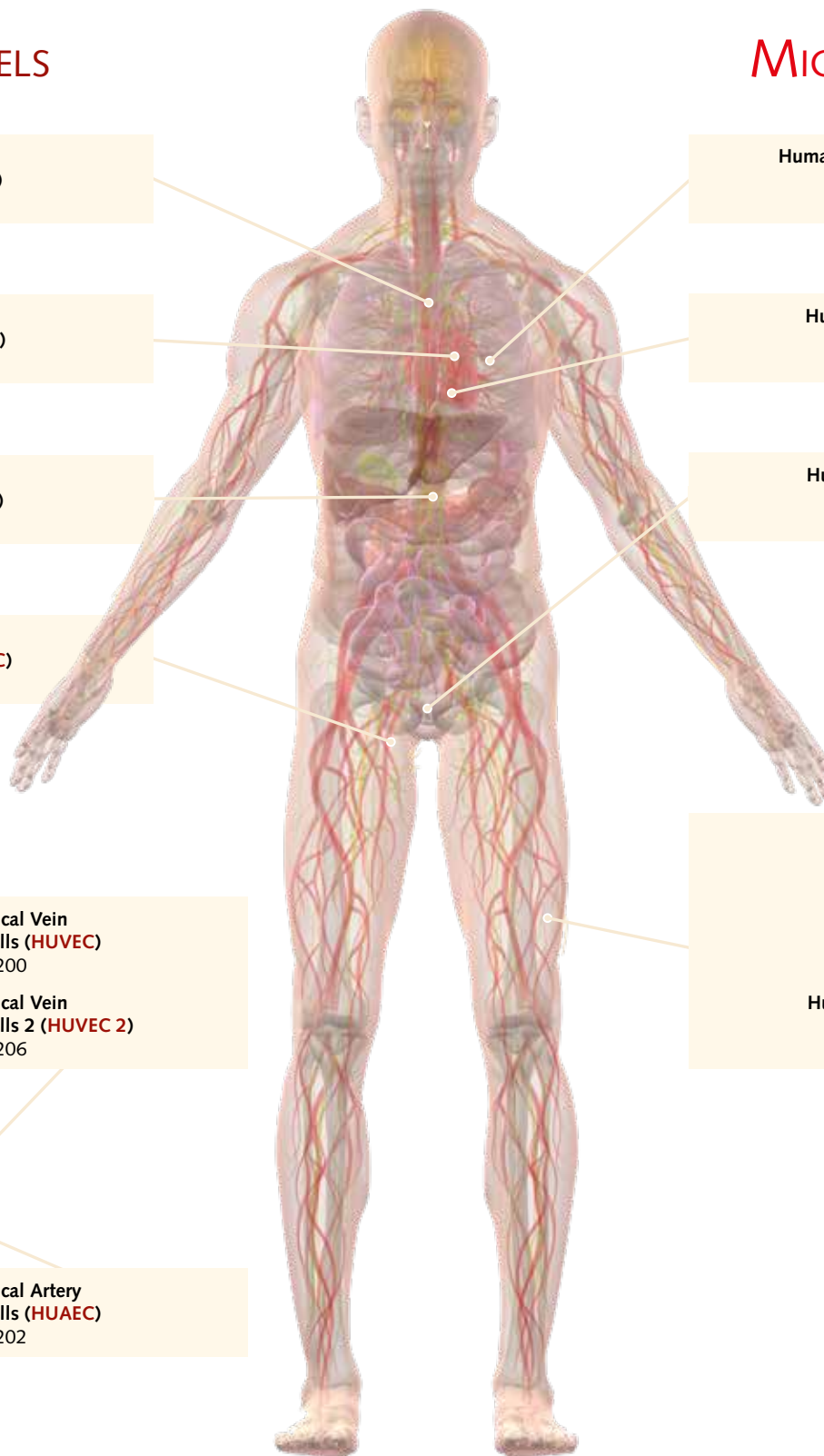
Human Cardiac Microvascular
Endothelial Cells (**HCMEC**)
Cat. No. C-12285

Human Uterine Microvascular
Endothelial Cells (**HUtMEC**)
Cat. No. C-12295

Human Dermal Blood
Endothelial Cells (**HDBEC**)
Cat. No. C-12211

Human Dermal Lymphatic
Endothelial Cells (**HDLEC**)
Cat. No. C-12216

Human Dermal Microvascular
Endothelial Cells (**HDMEC**)
Cat. No. C-12210



PromoCell GmbH

Sickingenstr. 63/65
69126 Heidelberg
Germany

Email: info@promocell.com
www.promocell.com

USA/Canada

Phone: 1 – 866 – 251 – 2860 (toll free)
Fax: 1 – 866 – 827 – 9219 (toll free)

Deutschland

Telefon: 0800 – 776 66 23 (gebührenfrei)
Fax: 0800 – 100 83 06 (gebührenfrei)

France

Téléphone: 0800 – 90 93 32 (ligne verte)
Téléfax: 0800 – 90 27 36 (ligne verte)

United Kingdom

Phone: 0800 – 96 03 33 (toll free)
Fax: 0800 – 169 85 54 (toll free)

Other Countries

Phone: +49 6221 – 649 34 0
Fax: +49 6221 – 649 34 40

© PromoCell GmbH